

How To Change wCK ID

August 6th, 2008, ROBOBUILDER

1. Introduction

: wCK module in Robobuilder Kit is configured own ID from 0 to 15. But you may change the wCK ID as you want to do from 0 to 30. This document describes how to change wCK ID. With this tip, you can change other wCK parameter in similar way.

2. Requirements

- ① wCK
- ② wCK Cable
- ③ Control Box(RBC)
- ④ PC Cable
- ⑤ Power supply adaptor
- ⑥ Windows XP OS PC
- ⑦ wCK Programmer S/W

3. Procedures (Change wCK ID from 2 to 0)

- ① Connect wCK, Control Box, Power Supply Adaptor, with PC

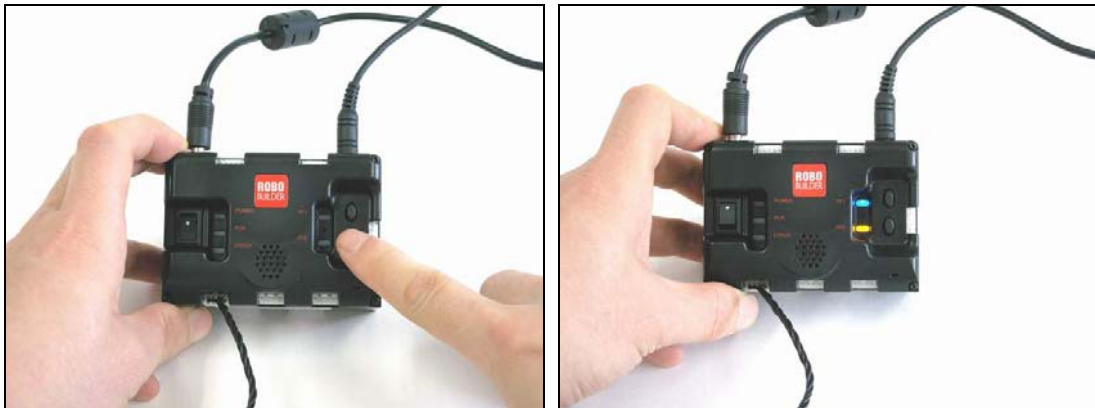


※ It would be no problem to connect one wafer in wCK with any one wafer in Control Box.

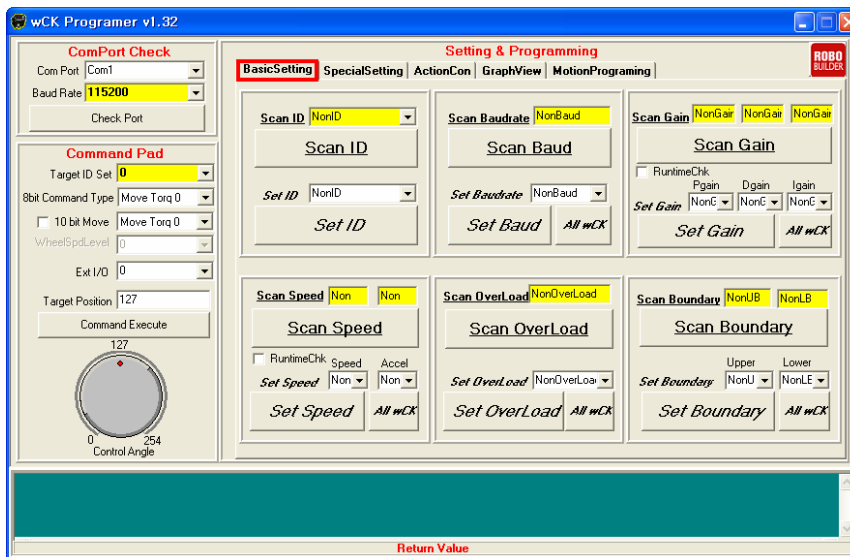
※ Caution : **Make sure to connect only one wCK when you want to change wCK ID.**

However, you may connect more than one wCK if you change other parameters except ID.

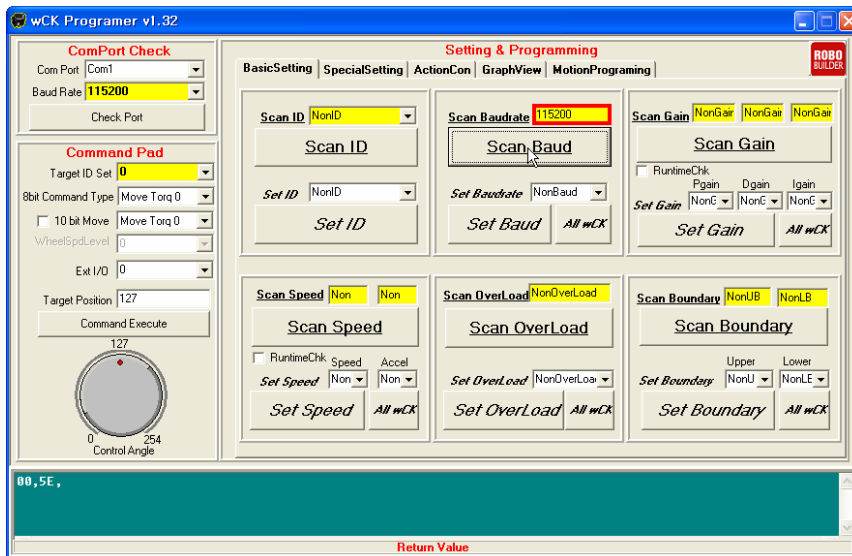
- ② PF1 LED (Blue), PF2 LED (Orange) lights because the Control Box become PC control mode when you power on after you pressed PF2 button as shown in the below figure.



- ③ Run wCK Programmer in PC, then select BasicSetting Tap.

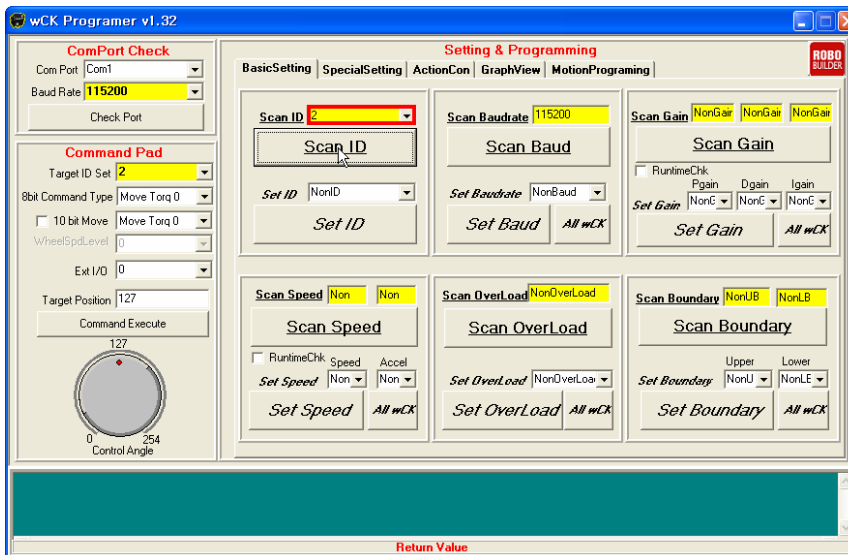


- ④ Match the Com Port with actual Control Box connected COM Port, then press **Scan Baud** button, it shows “wCK configured comm. speed” in Scan Baudrate.

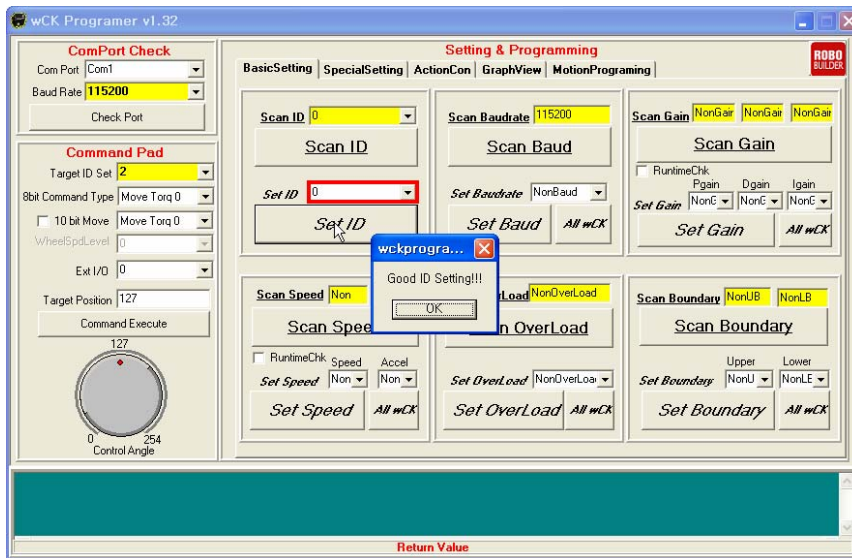


※ If comm. speed is not shown, and just show “Try Again” message, check out the connection between wCK cable and PC cable.

⑤ Click **Scan ID** to see the configured ID.



⑥ Select ID to be changed in *Set ID*, then click **Set ID** button, it shows new ID no. in Scan ID with ‘Good ID Setting!!!’ message



⑦ Completed!